

POWERPIN INC.

"Hitching For Business"

AG-IMPLEMENT HITCHES



Implement Hitches Distributed by:


NORTHFIELD
INDUSTRIES



WE PROVIDE MORE THAN JUST HITCHES

Over 30 years of expertise to insure manufacturers have the right hitch in the right application.

Power Pin is the expert in drawbar hitching having supplied the compatible Drop Pin hammer strap to tractor manufactures since 1997 as a standard factory feature for Deere , CASE , New Holland, Versatile, Claas, Fendt, JCB, McCormick and many other tractor manufactures on tractors 150 HP and over. Power Pin was the leader in developing ISO 21244 the Implement Hitch Standard and Brian Olson was recognized by ASABE in 2018 for outstanding contributions to ASABE Standards and safety within the agricultural industry winning the ASABE Evelyn E. Rosentreter Award.

For thirty years Power Pin's cast implement hitches have been in the field and customers can rest assured they are buying the best design at the best value.

AGRICULTURAL HITCHES

Hitching Power Pin's 30 years of expertise in the AG Equipment industry and Northfield Industries distribution and excellent service to their customers; together we provide a full line of AG Hitches.



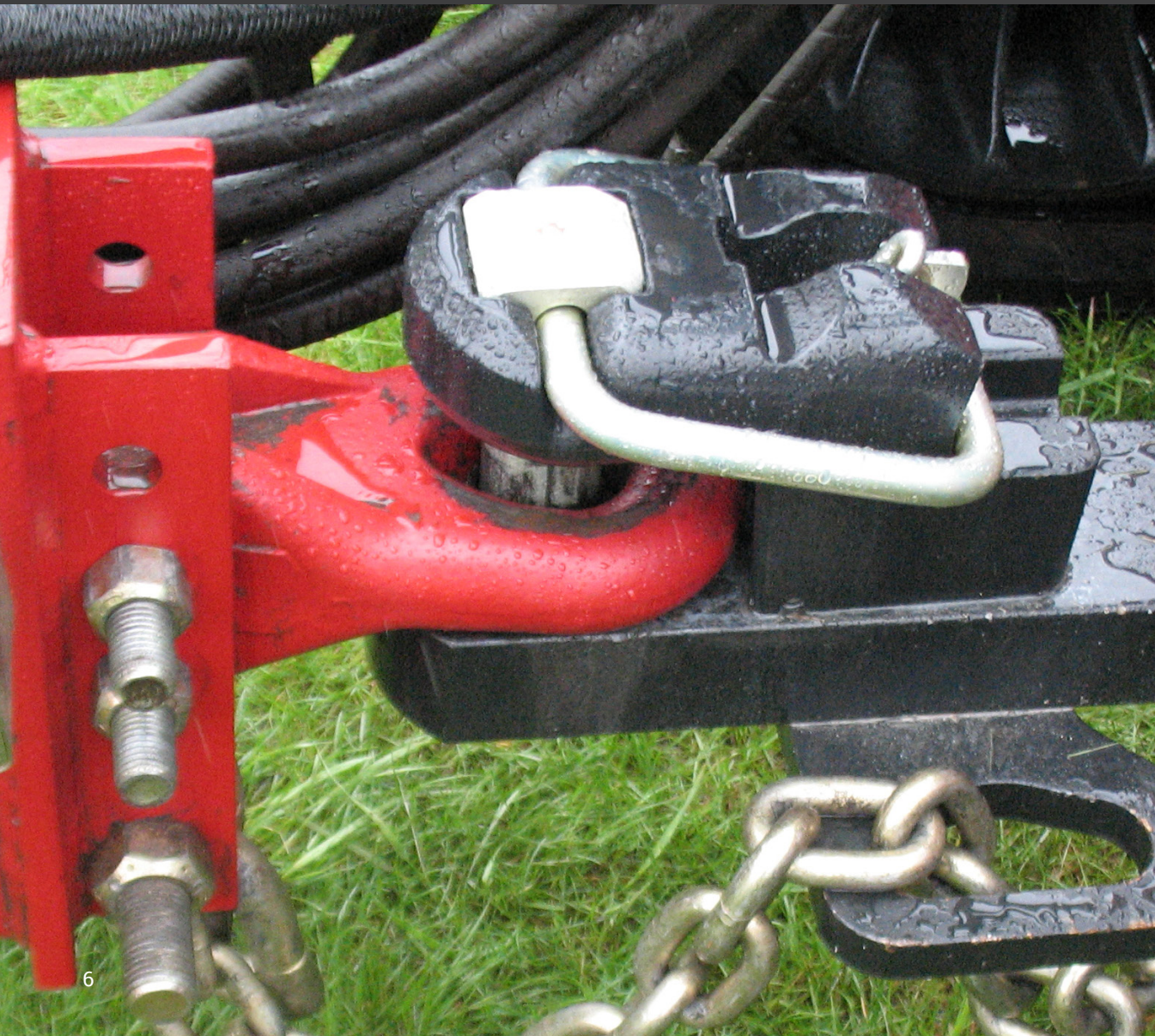
For hitches, hubs, spindles and jacks it's one purchase order with one shipment through Northfield Industries!

RING HITCHES

The new Clevis / Ring Implement Hitch insures the manufacturer meets the Implement Ring Standard and allows their customer to quickly and easily switch tractors and implements around seamlessly and without any tools.

Designed with a larger contact wear area that reduces wear on the ring hitch plus a bolt on clevis that always stays with the ring hitch.

Simply loosen the bolt and swing the clevis to the side when it is not required.

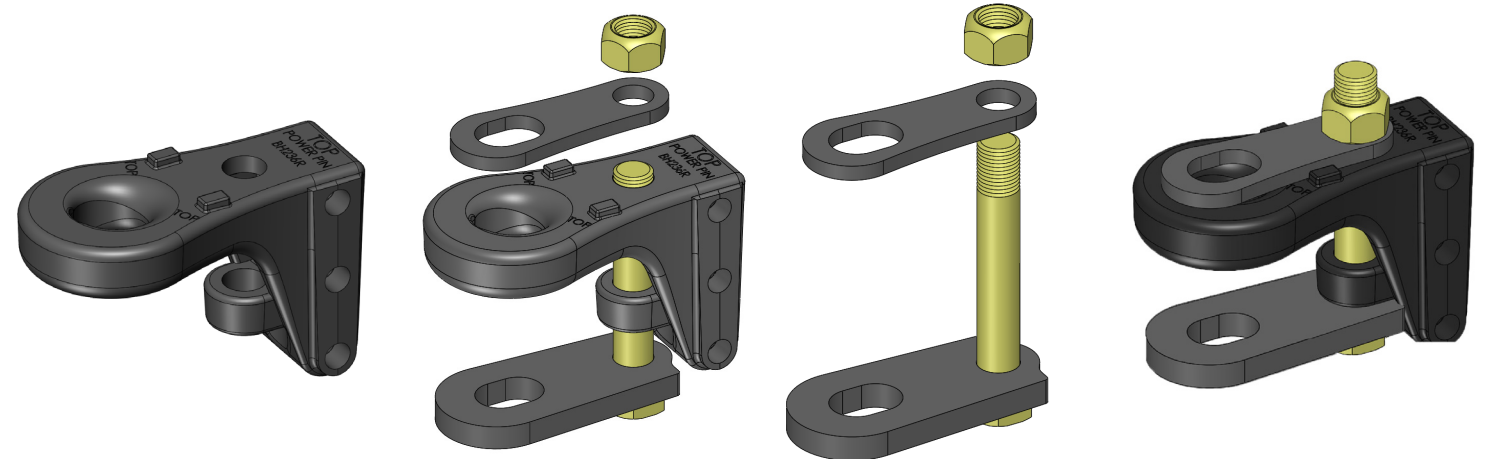
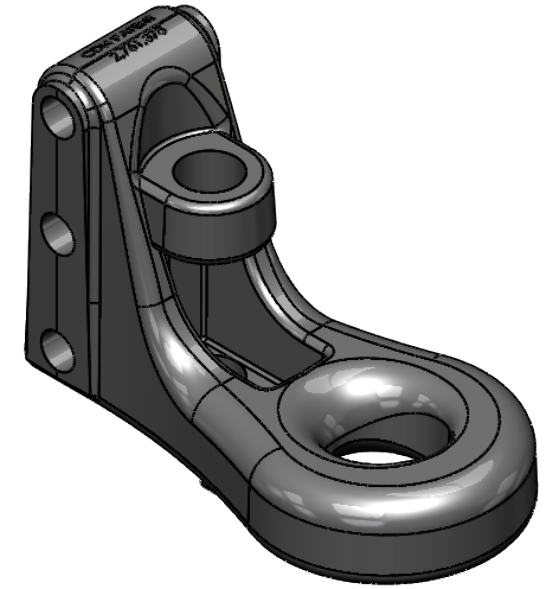


patent protected clevis ring hitches

Category 2 Ring Hitch

3 HOLE BH236-2R

Rated for a Draft Load of **55,000 lbs**



CAPACITY

3,700 lbs Max. Vertical Load
55,000 lbs Max. Draft Load
Max. Drawpin Size 1.50"
Up to 154 H.P.



FEATURES

Ring-Hitch design allows for articulation while having a flat surface on the inner ring to reduce wear.
Hitch Bracket thickness -1/2" minimum (not supplied)



MOUNTING DIMENSIONS

Mounting holes 2" apart with 5/8" holes and base width 2.75".
Use (3) 5/8" Diameter grade 8 bolts. (Not included)

All hitches are designed in accordance to ISO 21244-2008

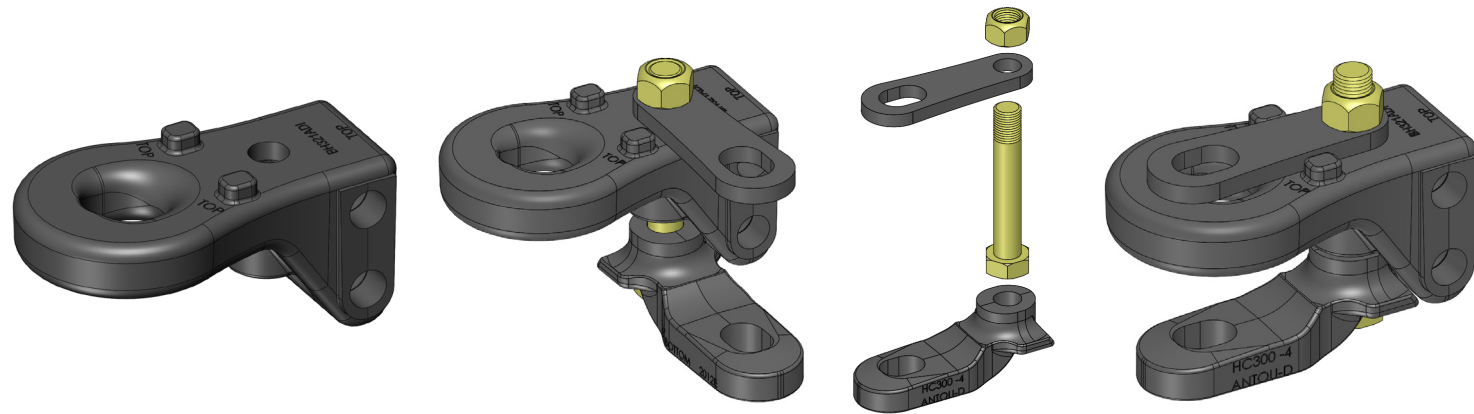
NORTHFIELD
INDUSTRIES

POWERPIN INC.
"Hitching For Business"

Category 3 Ring Hitch

2 HOLE BH321ADI

Rated for a Draft Load of **108,000 lbs**



CAPACITY

9500 lbs Max. Vertical Load
108,000 lbs Max. Draft Load
Max. Drawpin Size 2"
Up to 248 H.P.



FEATURES

Ring-Hitch design allows for articulation while having a flat surface on the inner ring to reduce wear.
Hitch Bracket thickness - 5/8" minimum (not supplied)



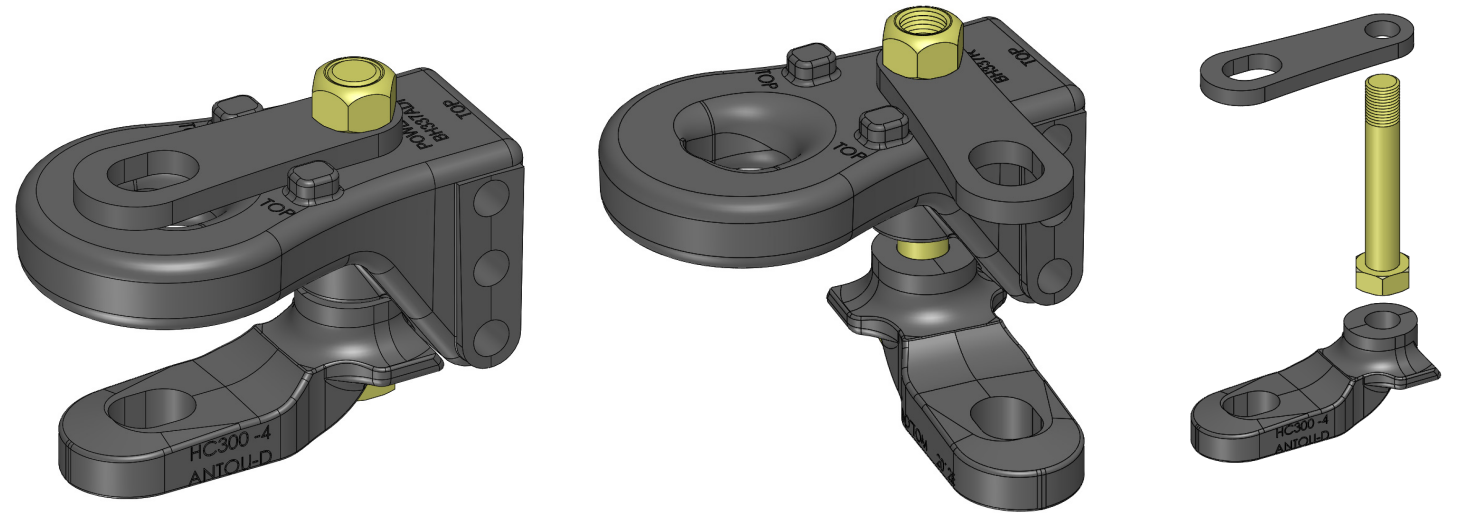
MOUNTING DIMENSIONS

Mounting holes 2.25" apart with 1" holes and base width 4".
Use (2) 1" Diameter grade 8 bolts. (Not included)

Category 3 Ring Hitch

3 HOLE BH337R

Rated for a Draft Load of **97,000 lbs**



CAPACITY

7,000 lbs Max. Vertical Load
97,000 lbs Max. Draft Load
Max. Drawpin Size 2.00"
Up to 248 H.P.



FEATURES

Ring-Hitch design allows for articulation while having a flat surface on the inner ring to reduce wear.
Hitch Bracket thickness - 5/8" minimum (not supplied)



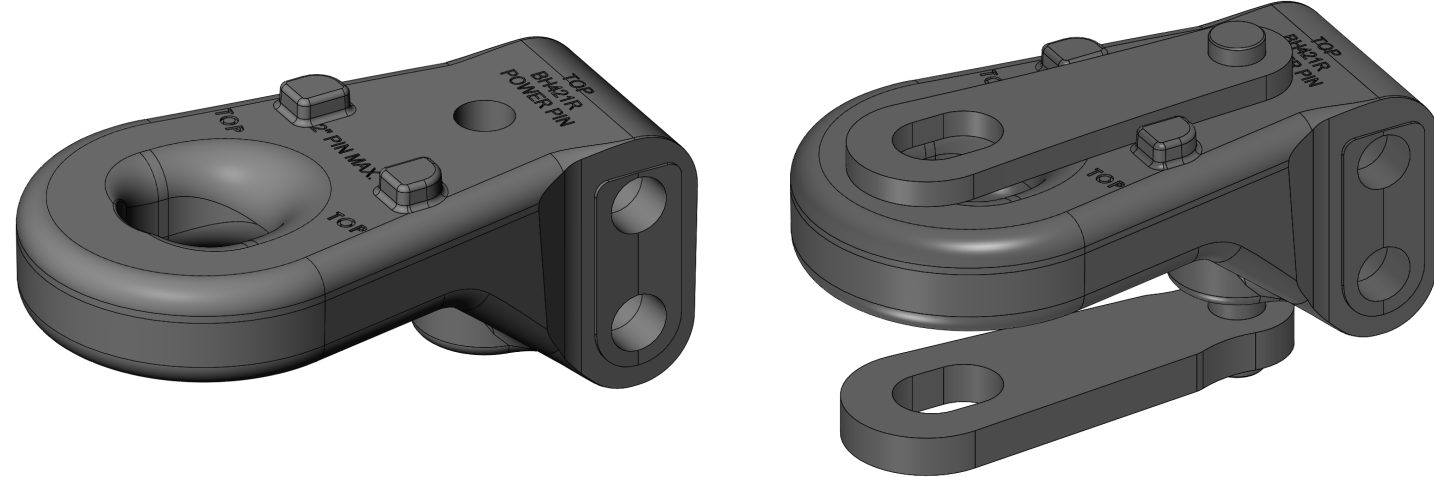
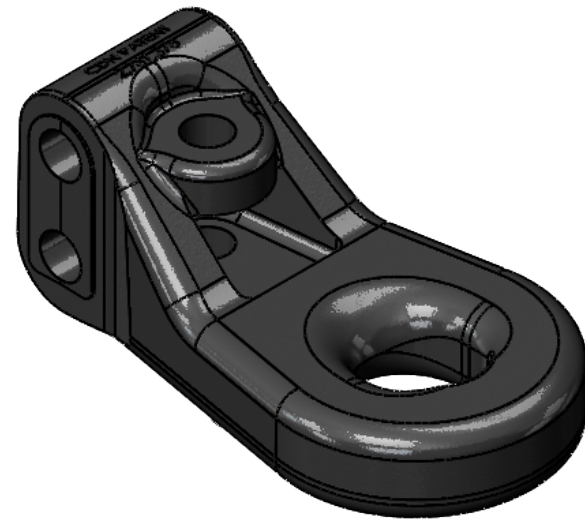
MOUNTING DIMENSIONS

Mounting holes 1.5" apart with 3/4" holes and base width 4".
Use (3) 3/4" Diameter grade 8 bolts. (Not included)

Category 4 Ring Hitch

2 HOLE BH421ADI

Rated for a Draft Load of **120,000 lbs**



CAPACITY

10,000 lbs Max. Vertical Load
120,000 lbs Max. Draft Load
Max. Drawpin Size 2"
Up to 402 H.P.



FEATURES

Ring-Hitch design allows for articulation while having a flat surface on the inner ring to reduce wear.
Hitch Bracket thickness -3/4" minimum (not supplied)



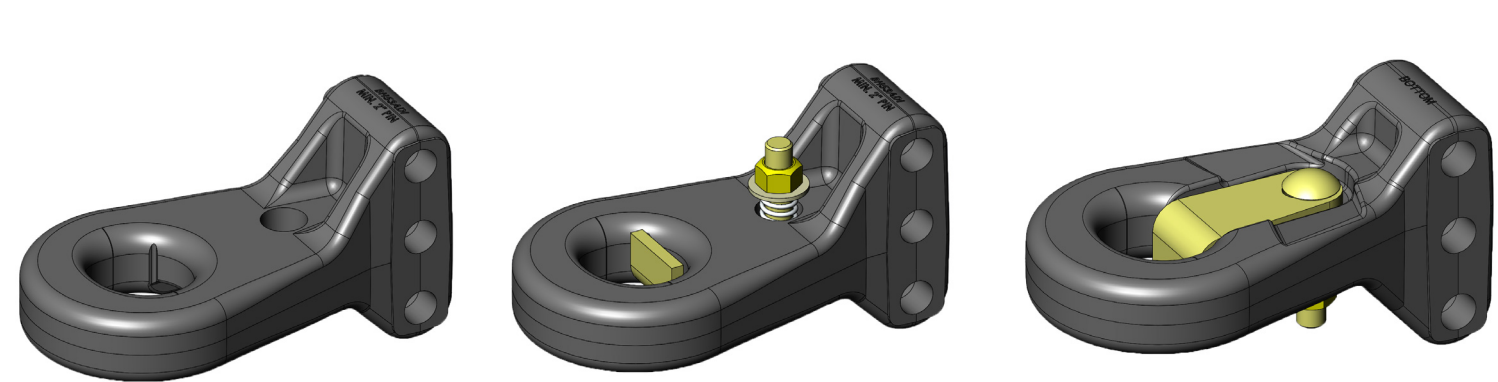
MOUNTING DIMENSIONS

Mounting holes 2.25" apart with 1" holes and base width 4".
Use (2) 1" Diameter grade 8 bolts. (Not included)

Category 5 Ring Hitch

3 HOLE BH53ADI

Rated for a Draft Load of **135,000 lbs**



CAPACITY

12,000 lbs Max. Vertical Load
135,000 lbs Max. Draft Load
Max. Drawpin Size 2.75"
Up to 670 H.P.



FEATURES

Ring-Hitch design allows for articulation while having a flat surface on the inner ring to reduce wear.
Hitch Bracket thickness -7/8" minimum (not supplied)



MOUNTING DIMENSIONS

Mounting holes 2.25" apart with 1" holes and base width 4".
Use (3) 1" Diameter grade 8 bolts. (Not included)

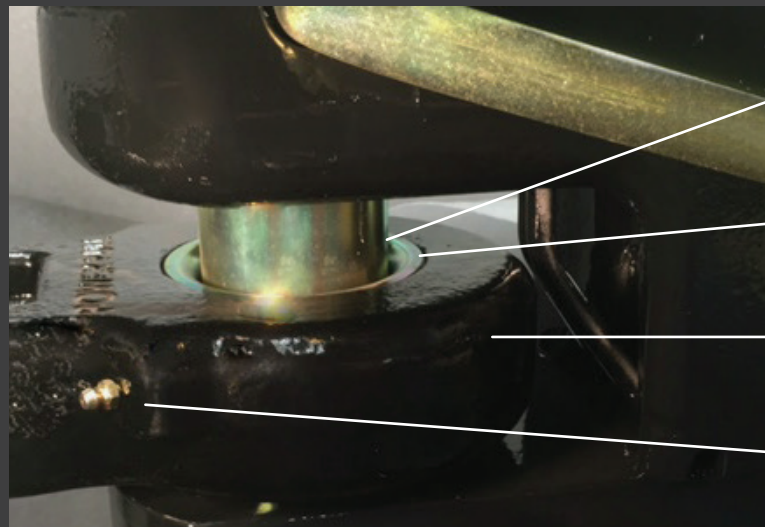
NEW AGRICULTURAL IMPLEMENT AB HITCHES

With the 600 HP plus tractors our industry has reached the limits of a steel to steel drawpin/ring connection. Only by increasing contact area can we prolong the life of the tractor drawpin and implement ring hitch.

This quick change option of the AB Hitch is unique as no tools are required! If the operator does not want to change out the spherical bushing, an optional flanged bushing drops in the ball to reduce the drawpin hole size for smaller tractor drawpins. Simple and cost effective – an Industry exclusive!

Farmers are the driving force of this improvement, demanding a better connection while reducing their costs of replacing old style ring hitches, and expensive tractor drawpins. Implement manufactures are adopting the AB Hitch on their implements as it addresses the age old problem of wear and too much play in the connection.

Simply turn the spherical bushing half a turn to take out and replace with a new bushing that matches the category of tractor.



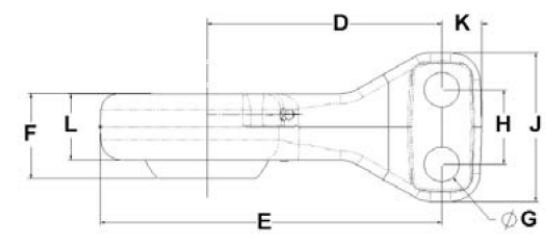
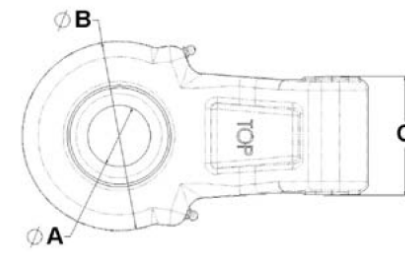
Huge contact area dramatically reduces draw pin and implement ring hitch wear

Tapered spherical bushing makes for easier hook up

The design of the AB Hitch allows for 45 degrees of articulation

Grease zerts are protected at the back of the AB Hitch

patent protected articulating ball hitches



| | CATEGORY 3 | | | | | CATEGORY 4 | | | | | CATEGORY 5 | |
|-------------------------------|------------|---------|----------|-----------|------------|------------|----------|-----------|------------|-------------|-------------|----------|
| | BH3SABLA | BH3SABA | BH3SABSA | BH3SAB3HA | BH3SAB3HSA | BH4SABA | BH4SABSA | BH4SAB3HA | BH4SAB3HSA | BH4SAB3HSSA | BH5SABA | BH5SABSA |
| A = Draw Pin Size | 2" | 1.5" | 1.25" | 1.5" | 1.25" | 2" | 1.5" | 2" | 1.5" | 1.25" | 2.75" or 2" | 2" |
| B = Ball Housing Diameter | 5.62" | 5.62" | 5.62" | 5.62" | 5.62" | 5.8" | 5.8" | 5.62" | 5.62" | 5.62" | 7.25" | 7.25" |
| C = Receiver Width | 3.96" | 3.96" | 3.96" | 3.96" | 3.96" | 3.96" | 3.96" | 3.96" | 3.96" | 3.96" | 3.96" | 3.96" |
| D = Draw Pin to Hole Mounting | 6.91" | 6.91" | 6.91" | 6.32" | 6.32" | 6.92" | 6.92" | 7" | 7" | 7" | 7.57" | 7.57" |
| E = Nose to Hole Mounting | 9.72" | 9.72" | 9.72" | 9.12" | 9.12" | 10.07" | 10.07" | 9.82" | 9.82" | 9.82" | 11.20" | 11.20" |
| F = Ball Thickness | 2.66" | 2.53" | 2.53" | 2.53" | 2.53" | 2.66" | 2.53" | 2.66" | 2.53" | 2.53" | 2.88" | 2.75" |
| G = Bolt Hole Size | 1" | 1" | 1" | .77" | .77" | 1" | 1" | 1" | 1" | 1" | 1" | 1" |
| H = Bolt Hole Distance | 2.25" | 2.25" | 2.25" | 1.5" | 1.5" | 2.25" | 2.25" | 2.25" | 2.25" | 2.25" | 2.25" | 2.25" |
| Number of Bolts in Receiver | 2 | 2 | 2 | 3 | 3 | 2 | 2 | 3 | 3 | 3 | 3 | 3 |
| J = Receiver Height | 4.5" | 4.5" | 4.5" | 4.5" | 4.5" | 4.5" | 4.5" | 6.75" | 6.75" | 6.75" | 6.75" | 6.75" |
| K = Hole Centre to Back | 1.18" | 1.18" | 1.18" | .87" | .87" | 1.18" | 1.18" | 1.18" | 1.18" | 1.18" | 1.18" | 1.18" |
| L= Tongue Thickness | 1.94" | 1.94" | 1.94" | 1.88" | 1.88" | 2" | 2" | 2.06" | 2.06" | 2.06" | 2.38" | 2.38" |
| Weight (lbs.) | 25.5 | 25.5 | 25.5 | 22.8 | 23 | 27 | 27 | 31 | 31 | 31 | 41.8 | 42.8 |

REPLACEMENT BUSHINGS

| | | |
|-------|------------------------------|----------|
| HM31B | Spherical Bushing Cat. 3 & 4 | 2.00" ID |
| HM32B | Spherical Bushing Cat. 3 & 4 | 1.50" ID |
| HM33B | Spherical Bushing Cat. 5 | 2.75" ID |
| HM36B | Spherical Bushing Cat. 3 | 1.25" ID |
| HM42B | Spherical Bushing Cat. 5 | 2.00" ID |

FLANGED BUSHING OPTIONS

| | | |
|-------|---------------------------|---------------------|
| HM34F | Flanged Bushing Cat 5. | 2.0" ID |
| HM35F | Flanged Bushing Cat 3 & 4 | 1.50" ID & 2.00" OD |
| HM37F | Flanged Bushing Cat 3 & 4 | 1.25" ID & 2.00" OD |
| HM38F | Flanged Bushing Cat 3 & 4 | 1.25" ID & 1.50" OD |



We provide custom made mount-ups to meet your needs.

Step-down flange makes it easy to adapt to smaller drawpins insuring a tight connection.

All hitches are designed in accordance to ISO 21244-2008

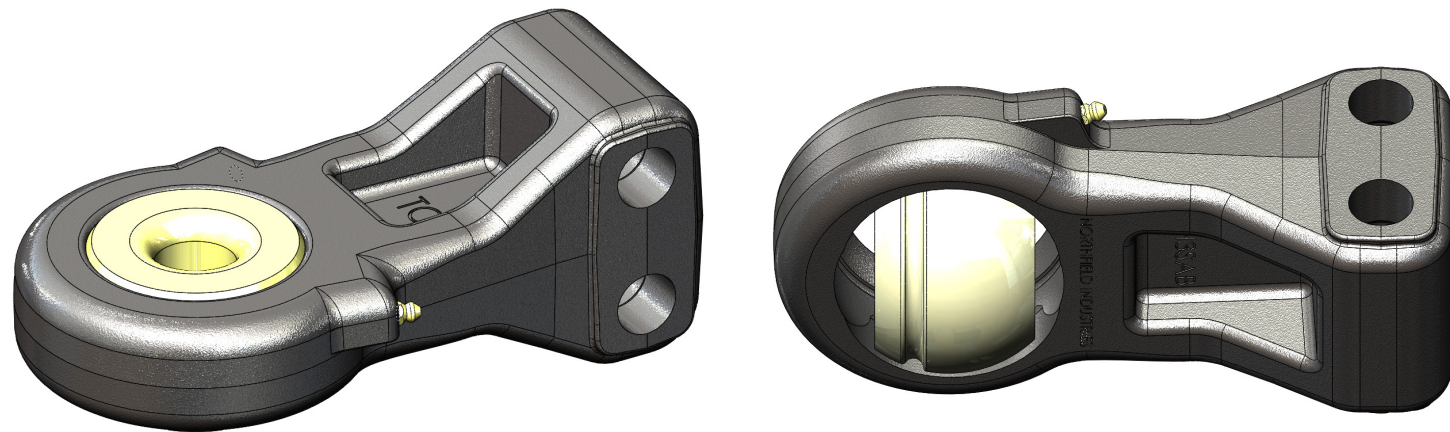


Category 3 Ball Hitch



2 HOLE BH3SABA

Rated for a Draft Load of **77,000 lbs**



CAPACITY

22,000 lbs Max. Vertical Load
77,000 lbs Max. Draft Load
Max. Drawpin Size X"
Up to 248 H.P.



FEATURES

The design of the AB Hitch allows for 45 degrees of articulation. Huge contact area dramatically reduces draw pin and implement ring hitch wear. Hitch Bracket thickness - 5/8" minimum



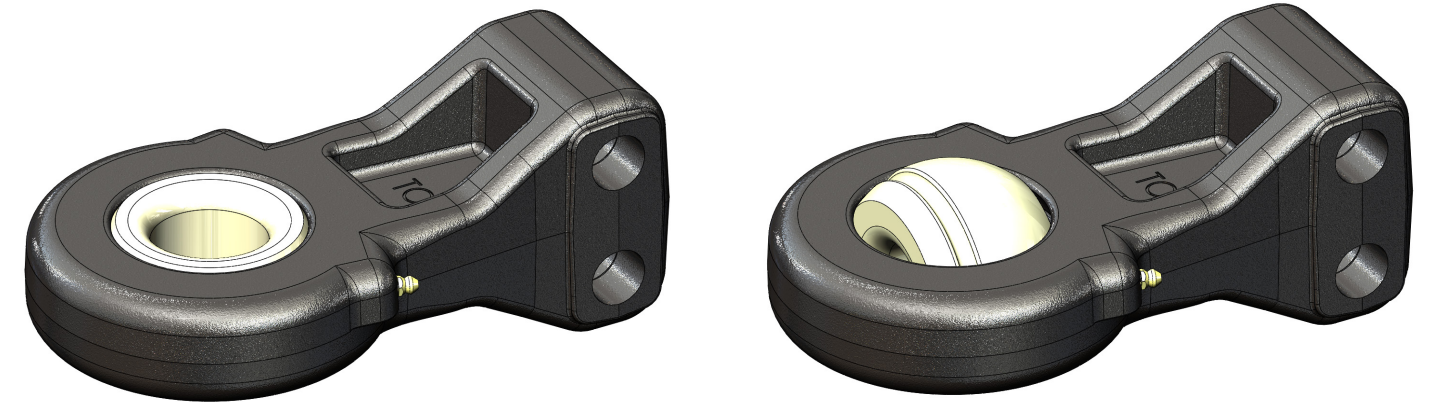
MOUNTING DIMENSIONS

Mounting holes 2.25" apart with 2" holes and base width 4".
Use (2) 1" Diameter grade 8 bolts. (Not included)

Category 4 Ball Hitch

2 HOLE BH4SABA

Rated for a Draft Load of **114,000 lbs**



CAPACITY

25,000 lbs Max. Vertical Load
114,000 lbs Max. Draft Load
Max. Drawpin Size 2"
Up to 402 H.P.



FEATURES

The design of the AB Hitch allows for 45 degrees of articulation. Huge contact area dramatically reduces draw pin and implement ring hitch wear. Hitch Bracket thickness - 3/4" minimum



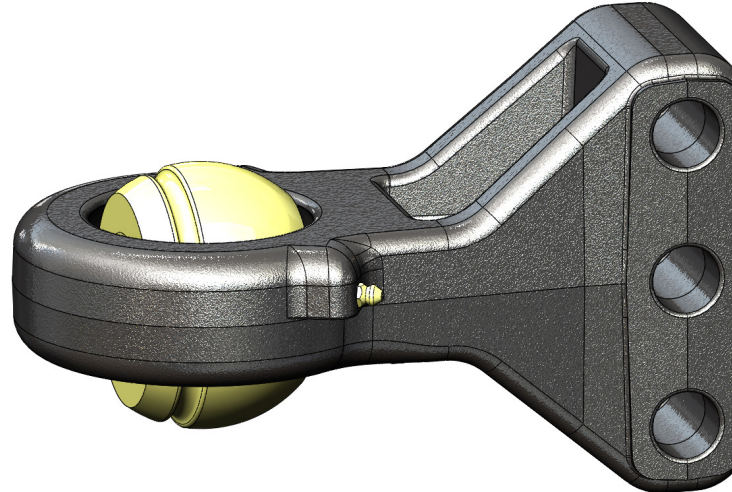
MOUNTING DIMENSIONS

Mounting holes 2.25" apart with 1" holes and base width 4".
Use (2) 1" Diameter grade 8 bolts. (Not included)

Category 4 Ball Hitch

3 HOLE BH4SAB3HA

Rated for a Draft Load of **131,000 lbs**



CAPACITY

25,000 lbs Max. Vertical Load
131,000 lbs Max. Draft Load
Max. Drawpin Size 2"
Up to 402 H.P.



FEATURES

The design of the AB Hitch allows for 45 degrees of articulation. Huge contact area dramatically reduces draw pin and implement ring hitch wear. Hitch Bracket thickness - 3/4" minimum



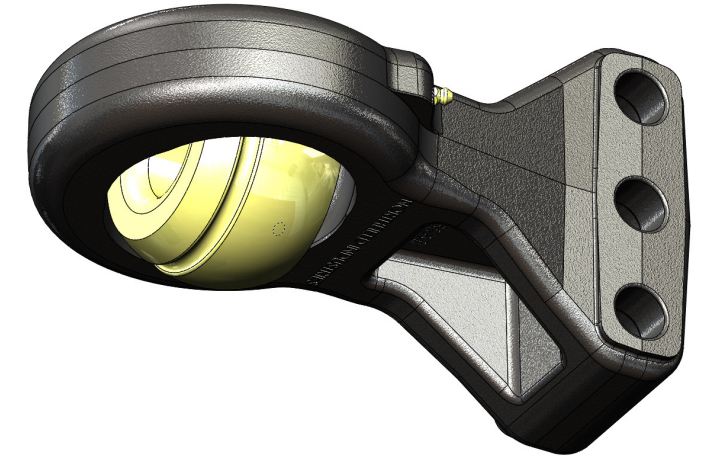
MOUNTING DIMENSIONS

Mounting holes 2.25" apart with 1" holes and base width 4".
Use (3) 1" Diameter grade 8 bolts. (Not included)

Category 5 Ball Hitch

3 HOLE BH5SABA

Rated for a Draft Load of **139,000 lbs**



CAPACITY

30,000 lbs Max. Vertical Load
139,000 lbs Max. Draft Load
Max. Drawpin Size 2.75"
Up to 670 H.P.



FEATURES

The design of the AB Hitch allows for 45 degrees of articulation. Huge contact area dramatically reduces draw pin and implement ring hitch wear. Hitch Bracket thickness - 7/8" minimum



MOUNTING DIMENSIONS

Mounting holes 2.25" apart with 1" holes and base width 4".
Use (3) 1" Diameter grade 8 bolts. (Not included)

AG HITCH LOAD RATINGS

RING HITCH LOAD RATINGS

| | | MATERIAL | W.L.L. MAX. VERTICAL LOAD | W.L.L. MAX. DRAFT LOAD |
|------------------------|----------------------|-------------|------------------------------|---------------------------|
| CAT. 2 UP TO 154 HP | BH236-2R | D80 | 3,700 lbf | 55,000 lbf |
| CAT. 3 UP TO 248 HP | BH337R | D80 | 7,000 lbf | 97,000 lbf |
| | BH337ADI | ADI Grade 4 | 9,500 lbf | 108,000 lbf |
| | BH321R | D80 | 7,000 lbf | 97,000 lbf |
| | BH321IH | D80 | 7,000 lbf | 97,000 lbf |
| | BH321ADI | ADI Grade 4 | 9,500 lbf | 108,000 lbf |
| | HC300 – Hitch Clevis | D80 | 3,000lbf | 36,000 lbf |
| CAT. 4 UP TO 402 HP | BH421ADI | ADI Grade 4 | 10,000 lbf | 120,000 lbf |
| CAT. 5 UP TO 670 HP | BH53ADI | ADI Grade 3 | 12,000 lbf | 135,000 lbf |

ARTICULATING BALL HITCH LOAD RATINGS

| | | MATERIAL | MAX. VERTICAL LOAD | MAX. DRAFT LOAD |
|--|------------------------------|-------------|--------------------|-----------------|
| CAT. 3 UP TO 248 HP | BH3SABA 1 ½" & 1 ¼" pin | ADI Grade 3 | 22,000 lbf | 77,000 lbf |
| | BH3SAB3HA 1 ½" & 1 ¼" pin | ADI Grade 3 | 22,000 lbf | 95,000 lbf |
| Hitch Bracket Plate thickness – 5/8" Minimum - 5/16" penetration weld from both sides. | | | | |
| CAT. 4 UP TO 402 HP | BH4SABA 2" & 1 ½" pin | ADI Grade 3 | 25,000 lbf | 114,000 lbf |
| | BH4SAB3HA 2" & 1 ½" pin | ADI Grade 3 | 25,000 lbf | 131,000 lbf |
| | BH4ROA 2" & 1 ½" pin | ADI Grade 3 | 25,000 lbf | 135,000 lbf |
| Hitch Bracket Plate thickness – 3/4" Minimum - 3/8" penetration weld from both sides. | | | | |
| CAT. 5 UP TO 670 HP | BH5SABA 2 ¾" & 2" pin | ADI Grade 3 | 30,000 lbf | 139,000 lbf |
| Recommended Hitch Bracket thickness – 7/8" Minimum - 7/16" penetration weld from both sides. | | | | |

When mounting Hitch into Bracket there should be no play between hitch and bracket. If so, use shims or washers to take up the slack before using Gr.8 bolts to mount it tight. This is to help from shearing off the bolts when under extreme side loads.

Hubs & Spindles

Tongue Jacks & Hitches

Machined Products



Key Attributes:

Available in 4 – 10 bolt pattern
Up to 32,000 lb. rating
Fully customizable to spec
Assembly in house

Key Attributes:

Jacks: Up to 12,000 lb. load rating fully customizable to spec with warranty.

Hitches:

AG Implement Articulating Ball Hitches and Clevis Ring Hitches, from Cat 2 through Cat 5.

Key Attributes:

Up to 17,000 lb. parts
Turn parts 3/8"-78"
Machining capabilities in U.S. & China
Full fabricating & welding

 **NORTHFIELD**
INDUSTRIES

POWERPIN INC.
"Hitching For Business"